

SHARP

A Series

Professional Installation Projectors ideal
for corporate, higher education and
museum applications

A155U/A175U



4K UHD
READY

laser
light source

LCD laser installation projectors deliver extreme brightness and crystal-clear visuals that keep audiences engaged in conference rooms, auditoriums and sanctuaries

Why It Works for You

- Multi-screen wow factor - Seamlessly support Picture-by-Picture or Picture-in-Picture, and use TileMatrix to power 4Kx2K resolution across four projectors - no extra hardware needed.
- Effortless scalability – Built-in daisy chain and edge-blending let you expand visuals and merge multiple images into one seamless experience.



Next-level Integration

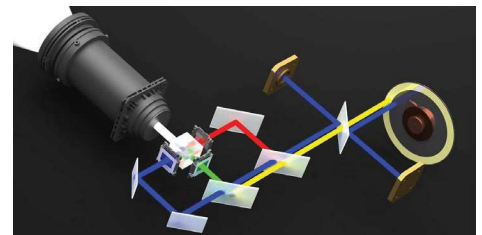
- 4K clarity that stands out – Sharp's proprietary video processing chip ensures stunning 4K 60P content with no detail lost.
- Total control, zero hassle – Preloaded with AMX Beacon, Crestron Roomview, Extron XTP, and PJ Link for smooth system integration. Plus, native support for competitor control codes reduces reprogramming costs.

Flexible Installations

- Fits any space – Motorized bayonet lenses make swaps fast, with throw distances from 4.25 to 141 ft.
- Install it your way – Roll-free and portrait-capable design adapts to almost any environment.

Laser Power

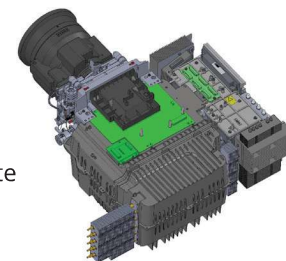
- Instant on – No wait time, images appear immediately after startup.
- Best-in-class balance – Dual blue lasers deliver consistent color and white balance throughout the projector's life.
- Built to last – Inorganic optical components extend reliability and peace of mind.



Virtually Maintenance-Free

- Filter free design.
- IP5X certified Sealed LCD cooling system prevents dust from reaching the optics and eliminates the need for a filter.
- Peace of mind – No dust artifacts, no image degradation, just long-lasting performance.

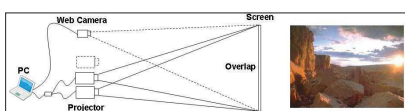
Sealed LCD Cooling System



Brighter, Safer Visuals

Boost brightness up to 68,000 lumens with built-in stacking correction (up to four projectors) - perfect for massive screens and high ambient light environments.

Never lose the picture - if one projector goes down, your content stays visible.



Seamless Big-Screen Impact

Edge blending merges multiple projections into one flawless, high-resolution image - no seams, just a smooth, cinematic display.



ProAssist™ Total Control, Simplified

Manage multiple projectors with ease using ProAssist™ software.

Fine-tune every detail - from input switching and lens adjustments to edge blending, uniformity, and gamma - all from a simple, intuitive interface.

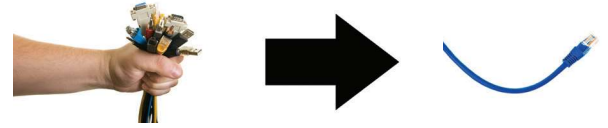
ProAssist™



Built-In HDBaseT: One Cable, Total Simplicity

Streamline installs with a single cable (up to 100m) carrying uncompressed Full HD video, audio, Ethernet, and control signals.

Cut costs, reduce clutter, and enjoy stunning visuals without extra hardware or complex wiring.



Stay Connected, Stay Flexible

Multiple digital inputs for fast, seamless switching between presentations.

Three audio inputs (HDMI1, HDMI2, and HDBaseT) let you easily add sound for a more engaging experience.

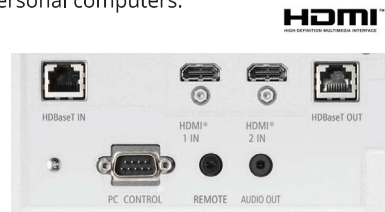
Remote control

Wired and wireless backlit remote allows you to adjust for complete control of the projector's menu structure in a well lit or dark environment. Direct controls such as lamp mode, aspect ratio, volume and input selection eliminates multiple button pushes.



Digital Inputs

Among the A Series' wide selection of inputs are dual HDMI w/HDCP and HDBaseT w/HDCP for connecting to high-definition sources such as Blu-ray players, cable boxes, satellite receivers and personal computers.



Cable Cover

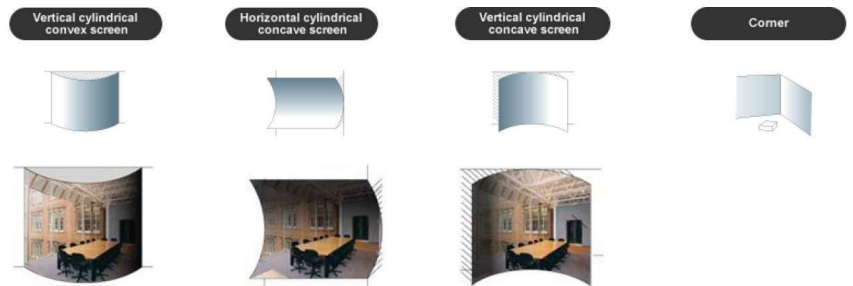
This optional accessory creates a clean look for your installation, while hiding signal cables and the power cord.



Advanced Software Features

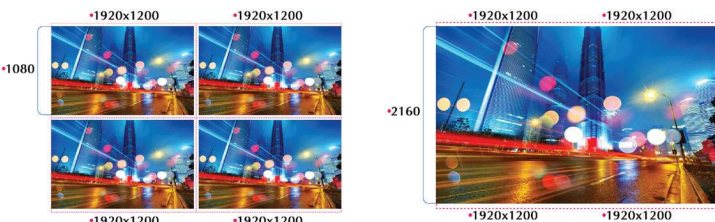
Geometric Correction

Projecting an image isn't confined to a standard flat screen or wall with the A Series. Geometric correction allows these models to project an image on spheres, cylinders, corner angles and many more non-standard surfaces.



Screen Splitter

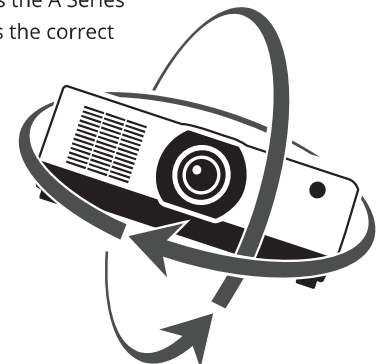
Sharp is committed to bringing the latest and greatest innovation to projectors. Multi-display capabilities and TileMatrix technologies are integrated into the new A Series projectors. This processing is all done internally and therefore eliminates the additional hardware typically required to produce a beautiful 4K resolution image.



Screen Splitter (Multi Display) by Daisy Chain

Roll Free

When installation requirements dictate the projector needs to be placed at different angles the A Series with Roll Free capabilities assures it is the correct projector of choice.



Unique Features That Save You Time & Money

Filter-free peace of mind – IP5x sealed LCD cooling system eliminates filters, cutting maintenance and lowering total cost of ownership.

Simplified connectivity – HDBaseT in/out lets you pass video, audio, and control between projectors with ease.

Seamless integration – Built-in competitor command support reduces reprogramming needs and speeds up installation.

Warranty

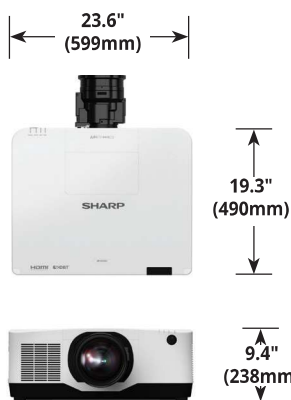
Registered owners receive a three (3) years or 20,000 hours (whichever comes first) parts and labor warranty including InstaCare next business day exchange.

In the Box

Remote control, batteries, power cord, quick start guide, product registration card.

Accessories

RMT-PJ40	Replacement Remote Control
Optional Lenses	XP-51ZL, XP-52ZL, XP-53ZL, XP-54ZL, XP-55ZL, XP-56ZL
Optional Terminal Cover	XP-13CV-B, XP-13CV-W
IPJ2000CM	Ceiling Mount
AEC006009	Adjustable Extension Column, 6" - 9"
AEC012018	Adjustable Extension Column, 12" - 18"
AEC0203	Extension Column, 2' - 3'
AEC0305	Adjustable Extension Column, 3' - 5'
XP-02LK	Mounting Bracket for XP-44ML



		XP-A155U	XP-A175U	
Display Technology		1.0" LCD		
Brightness (typical)		14,000 Lumens	16,000 Lumens	
Brightness (maximum)		15,000 Center Lumens	17,000 Center Lumens	
Resolution	Screen	WUXGA 1920x1200		
	Maximum	4K 4096 x 2160		
Aspect Ratio		16:10 (Supports 4:3, 16:9, 21:9)		
Contrast Ratio (up to)		3,000,000:1 (with Dynamic Contrast)		
Laser Life (up to)		20,000 hours		
Screen Size (diagonal)		60 to 500 in./ 1.5 to 12.7m		
Projection Distance		2.17 to 261.9 ft. / 0.67 to 79.8m		
Projection Angle		3.1 to 28.2° tele / 5.7 to 31.5° wide		
Throw Ratio	XP-51ZL	0.53 - 0.65:1		
	XP-52ZL	0.65 - 0.87:1		
	XP-53ZL	0.86 - 1.25:1		
	XP-54ZL	1.24 - 2.01:1		
	XP-55ZL	1.98 - 3.95:1		
	XP-56ZL	3.95 - 7.51:1		
Lens	Throw Ratio	XP-51ZL	0.53 - 0.65:1	
		XP-52ZL	0.65 - 0.87:1	
		XP-53ZL	0.86 - 1.25:1	
	Zoom	XP-54ZL	1.24 - 2.01:1	
		XP-55ZL	1.98 - 3.95:1	
		XP-56ZL	3.95 - 7.51:1	
Zoom Ratio	XP-51ZL	1.23x		
	XP-52ZL	1.34x		
	XP-53ZL	1.45x		
	XP-54ZL	1.62x		
	XP-55ZL	1.99x		
	XP-56ZL	1.91x		
Focus	Motorized			
	F-number, focal length, Weight	XP-51ZL	F=185 to 2.2, f= 12.0 - 14.8mm, 5.5 lbs. / 5.6 kg	
		XP-52ZL	F=1.84 to 2.25, f= 14.4 - 19.3mm, 3.5lbs. / 5.5 kg	
		XP-53ZL	F=1.8 to 2.24, f= 19.0 - 27.6mm, 3.7 lbs. / 5.3 kg	
		XP-54ZL	F=1.8 to 2.24, f= 27.7 - 44.9mm, 3.7 lbs. / 4.5 kg	
		XP-55ZL	F=1.84 to 2.58, f= 43.8 - 87.2mm, 3.7 lbs. / 5.4 kg	
XP-56ZL		F=2.0 to 2.5, f= 49.7 to 99.8mm, 3.7 lbs. / 1.7 kg		
Shift Shutter	+/-50% Vertical, +/-20% Horizontal			
Keystone Correction	Laser Shutter			
Synchronization Range	Horizontal	+/- 40° horizontal, +/-30° vertical		
	Vertical	24-153KHz		
Supported Video Standards	50-120Hz			
SD/HD Video Signal Compatibility	NTSC, NTSC4.43, PAL, PAL-60, PAL-M, PAL-N, SECAM			
PC Signal Compatibility	480i, 480p, 576i, 576p, 720p, 1080i, 1080p, 4K			
Macintosh Compatibility	VGA, SVGA, XGA, SXGA, SXGA+, UXGA, WUXGA, Quad HD			
Input Terminals	RGB1 (digital)	Yes		
	RGB2 (digital)	HDMI (V2.0) w/HDCP (V1.4/2.2)		
	RGB3 (digital)	HDMI (V2.0) w/HDCP (V1.4/2.2)		
	RGB4 (digital)	HDBaseT w/HDCP (V1.4/2.2)		
Output Terminals	Monitor Out	3G SDI (SMPTE ST 424M / SMPTE 292M)		
	Audio Out	HDBaseT Repeater		
External Control	Stereo Mini Jack			
Sync Compatibility	9-Pin D-Sub, Wired Remote, HDBaseT, RJ-45, USB (USB 2.0)			
Power Requirements	Separate Sync / Composite Sync / Sync on G			
Input Current	100-240V AC, 50/60 Hz		12.8A - 5.6A	
Power Consumption	(ECO off/ECO Mode/ Standby/Standby-Power Saving)	11.6A - 5.1A	1035W / 855W / 0.4W / 0.3W	
		960W / 855W / 0.4W / 0.3W		
Installation Orientation	Floor/Front, Floor/Rear, Ceiling/Front, Ceiling/Rear			
Product Dimensions (WxDxH)	23.6 x 9.4 x 19.3 in. / 599 x 238 x 490 mm			
Net Weight	63.3 lbs. / 28.7 kg			
Shipping Dimensions (WxDxH)	78.3 lbs. / 35.5 kg			
Gross Weight	29.1 x 15.0 x 24.8 in. / 735 x 382 x 629 mm			
Fan Noise	38 dB normal / 35 dB eco		42 dB normal / 37 dB eco	
Regulations	US	USA UL60950-1: 2005+A1: 2009+A2: 2013, IEC 60825-1:2014 (Ed.3), FCC Part15 Subpart B(ANSI C63.4.2014)		
	Canada	CAN/CSA C22.2 No.62368-1-18,3rd Edition, ICES-003 Issue 7(ANSI C63.4-2014)		
Operating	Altitude	0 to 3650 m (12,000 ft)		
	Temperature	41-104°F / 5-40°C		
	Humidity	20 to 85% Humidity (Non-Condensing)		
Storage	Altitude	0-12,000m / 0-39,370ft (above sea level)		
	Temperature	14-122°F / -10-50°C		
	Humidity	20% - 80% (non-condensing)		

* Lens does not ship with the projector. Additional accessories are available, including screens, carts, mount accessories and replacement cables. Visit <https://business.sharpusa.com> for details.



SHARP ELECTRONICS CORPORATION
100 Paragon Drive, Montvale, NJ 07645
1-800-BE-SHARP • www.sharpusa.com

©2025 Sharp Electronics Corporation. All rights reserved. Sharp is a registered trademark of Sharp Corporation and/or its affiliated companies. All other trademarks are the property of their respective owners.